

Customer Name:

Application Number:

Project:

Material:

Prepared By:

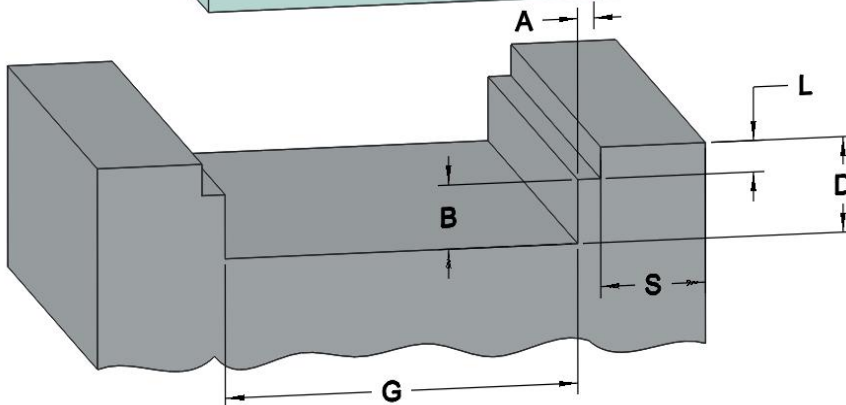
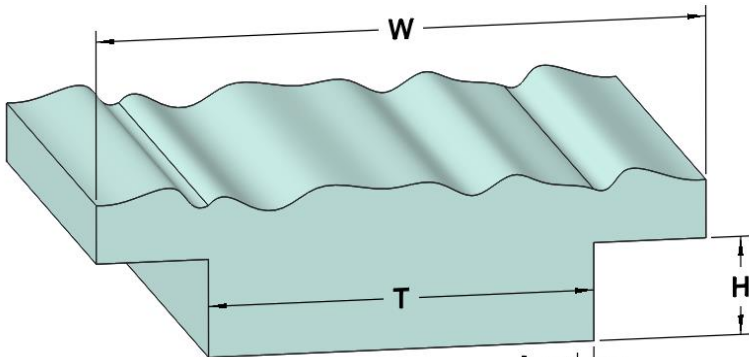
Date:

Revision:

Email:

	Dimension	General Guidelines	Recommended Size
W	Wall Thickness	Minimum 0.090" (2.29mm)	
B	Shear Length	Approximately 0.030" (0.76mm)	
A	Shear Width	0.008" - 0.020" (0.20mm - 0.51mm)	
T	Tongue Width	W/3	
H	Tongue Height	W/3	
G	Groove Width	$T - 2(A + C)$	
D	Groove Depth	H + 0.015" (0.38mm)	
L	Lead-in	Minimum 0.020" (0.51mm)	
S	Groove Side Wall Width	Minimum 0.035" (0.89mm)	
C	Clearance	0.002" to 0.004" (0.05mm - 0.10mm)	

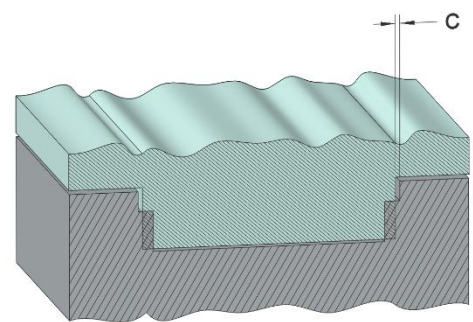
Horn Side



Fixture Side

The tongue and groove double shear joint for ultrasonic welding is used to obtain a very strong weld on parts smaller than 2" (50.8mm) in diameter or length.

This type of weld joint should generally not be used where a hermetic seal is required because air that is trapped between the two parts can be pushed out through the shear on either side, possibly leaving a small leak path.



Collapsed