

Customer Name:

Application Number:

Project:

Material:

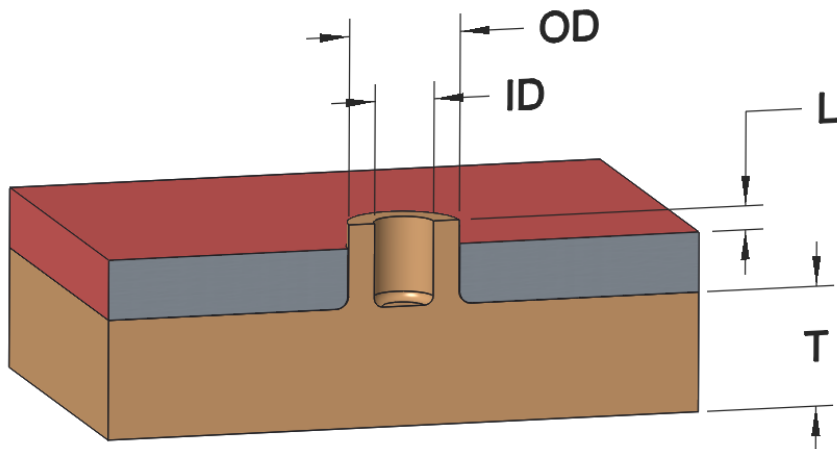
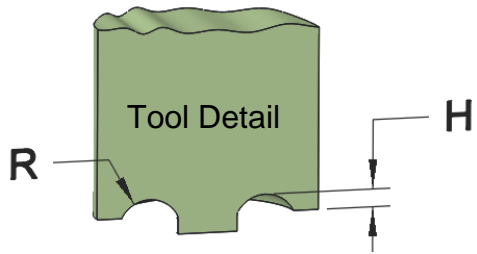
Prepared By:

Date:

Revision:

Email:

	Dimension	General Guidelines	Recommended Size
OD	Post Outer Diameter	> 0.156" (3.96mm)	
ID	Post Inner Diameter	~0.5OD	
L	Post Length	$0.4587R(ID + 2R) / (ID + 0.75R)$	
T	Wall Thickness	< 2 OD	
R	Dome Detail Radius	$1.5(OD - ID)$	
H	Dome Detail Height	0.333R	

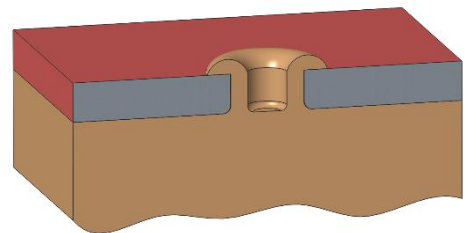


A generous radius should be placed at the base of the post to reduce stress in this area.

The low profile hollow boss staking configuration is generally used when a strong, short formed detail is required on a part with a thin wall.

The boss is hollow to prevent sink marks from forming on the opposite side of the wall during molding of the large post.

The low profile hollow boss detail generally has a very nice appearance.



Collapsed